



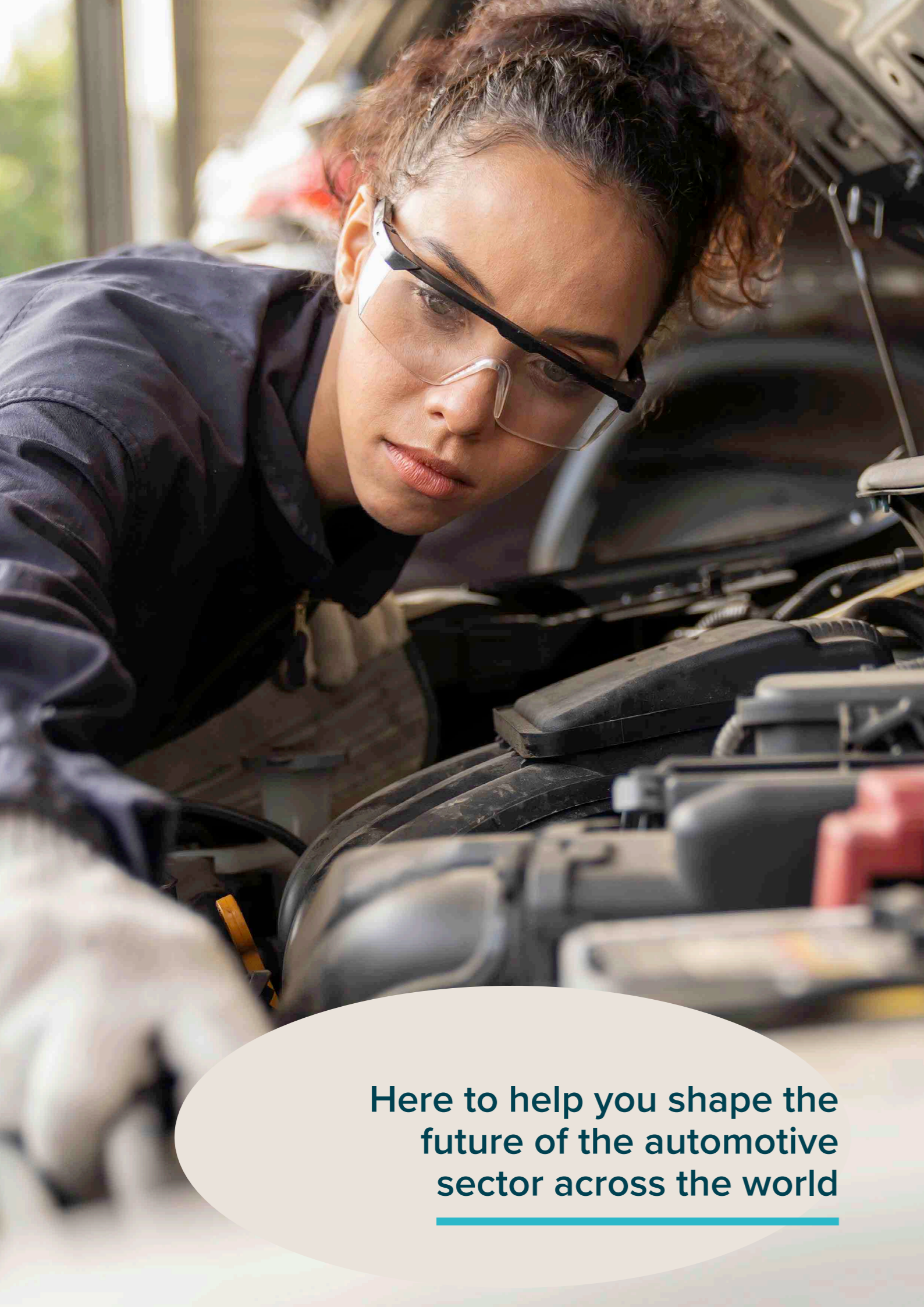
DRIVING THE AUTOMOTIVE SECTOR FORWARD



INSTITUTE OF THE
MOTOR INDUSTRY

ESTD 1920

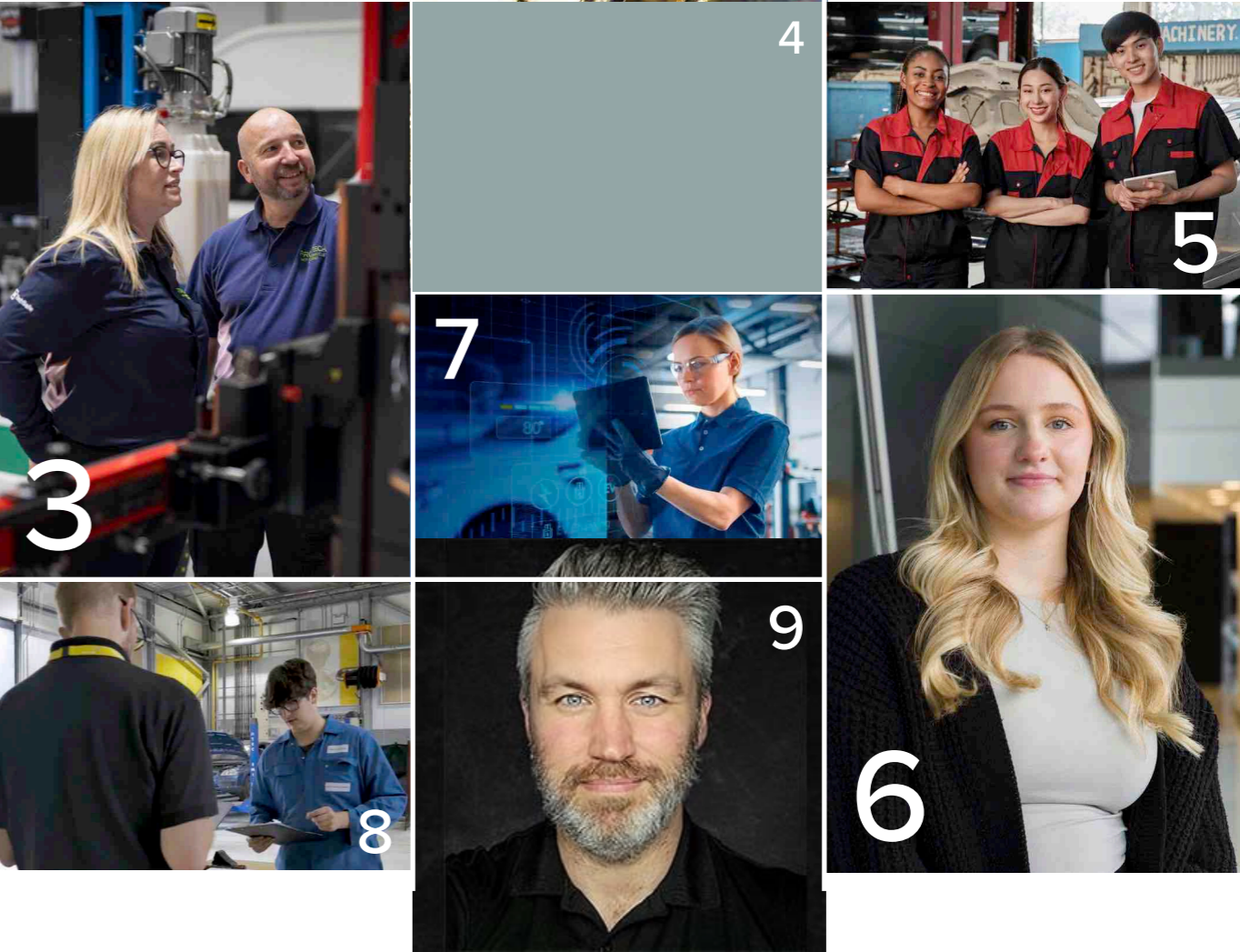
The professional body for people
working in automotive since 1920



Here to help you shape the
future of the automotive
sector across the world

Contents

	Page(s)
About us	3-4
Working with you	5-6
Building Future Skills for New Technology	7
Professional Services	8
IMI Membership	9
Contact Information	10



The Professional Body for people working in Automotive since 1920

The Institute of the Motor Industry (IMI) is the professional body for all individuals working and studying in automotive and has been the authoritative voice of the sector for over 100 years.

Our vision is to **build a diverse, skilled, adaptable, and professional automotive workforce**, helping them to achieve the skills, competence and professional recognition to succeed in their careers and be the best they can be.

Representing an international membership community of over **110,000 automotive professionals**, and collaborating with over **500 IMI Approved Centres and partners** worldwide, we're proud to play our part in shaping the sector by:

- Setting, upholding and promoting professional standards
- Driving talent attraction, progression and retention
- Developing skills for new and emerging technologies and future workplace requirements



IMI qualifications are the benchmark for people working and learning in automotive internationally. For example, we now export automotive vocational education, training and qualifications to countries including China, Malaysia, the UAE, USA and within Europe.

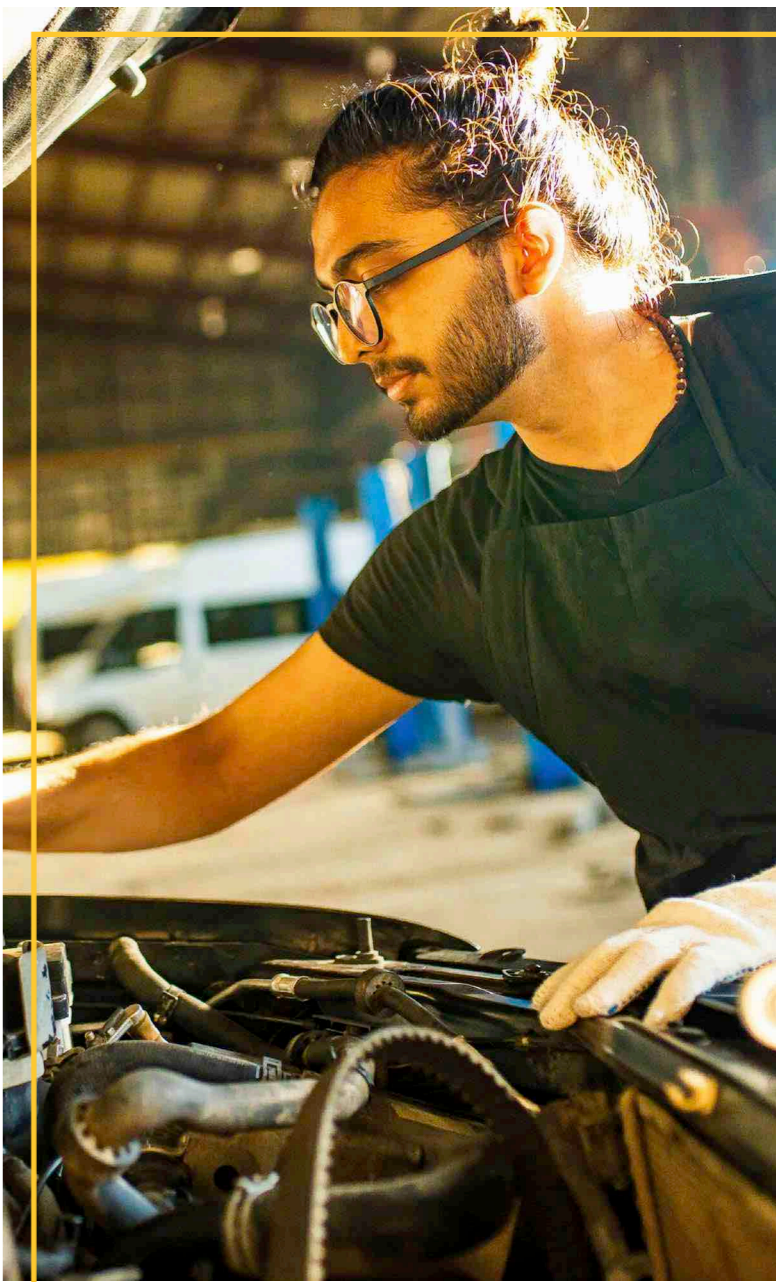
We support people working in the automotive sector to attain relevant, globally recognised professional competence, displayed via our Professional Register, providing a global benchmark of quality.

The IMI has set the benchmark for automotive skills development and professional standards for worldwide road user confidence.

Five winning ways the IMI champions businesses and the automotive sector

The IMI leads on delivering quality assurance, compliance, and membership to meet the needs of the sector.

- 1 Developing people and careers** – as a Professional Body, the IMI provides robust career pathways via its international qualifications for ambitious automotive professionals.
- 2 Creating and maintaining standards** – the IMI develops skills benchmarks and high-quality qualifications relevant to the rapidly evolving automotive mobility sector, delivered through approved IMI Centres and specialist partners across the globe.
- 3 Assessing competence** – through accrediting individuals' competence to operate in the sector, the IMI prepares and delivers work ready people for technical, customer-facing and management roles.
- 4 Building professional skills and attitudes in the sector** – the IMI aims to effect positive change by focusing on key issues such as electrification and safety, as well as promoting career opportunities for young people.
- 5 Connecting a global community** – regardless of background or status, every automotive professional is welcome to be part of the IMI community.



“

Being an IMI Approved Centre enables instant recognition within our retail automotive businesses in Malaysia. The IMI's portfolio of automotive qualifications is exceptional and encompasses all of our training needs. Importantly, with the new energy vehicle technologies and skills development, the IMI has qualifications that deliver the skills that our business needs and is valued by our staff and customers. Partnering with the IMI allows our learners, trainers and assessors to have access to the best international practice in terms of learning and development

Bermaz Auto

”

Our mission

To support automotive professionals to be the best they can be



Our vision

Is to build a skilled, adaptable, diverse and professional international automotive workforce



Working with you to develop work-ready, professional and sustainable talent

At the IMI, we passionately believe that the automotive industry is a driver of innovation, employment and economic growth. People working in the industry need the most relevant, up-to-date skills, knowledge and qualifications if they are to succeed.

The IMI's wealth of experience, quality assurance processes and resources will help you to develop talent and occupational competence by:

- Improving your skills base to support automotive sector investment at a national and/or regional level
- Creating, setting and maintaining global standards with up-to-date, high quality qualifications
- Improving employment prospects and sustainability for businesses
- Implementing a world-renowned skills system, operating to a global sector standard

- Improving teacher/trainer capability, progression and curriculum reform
- Reducing the skills gaps at both senior and entry level through quality training and assessments
- Providing a platform for professional recognition, such as professional registration, post-nominals and numerous opportunities for continuing professional development (CPD).

Faced with the rapid growth of new technologies and environmental challenges, IMI activities are concentrated on net zero emissions, with a major focus on; Autonomous, Connected, Electric and Hydrogen vehicles, innovation and production of electric vehicles (EV), development of Artificial Intelligence (AI) and autonomous vehicles.

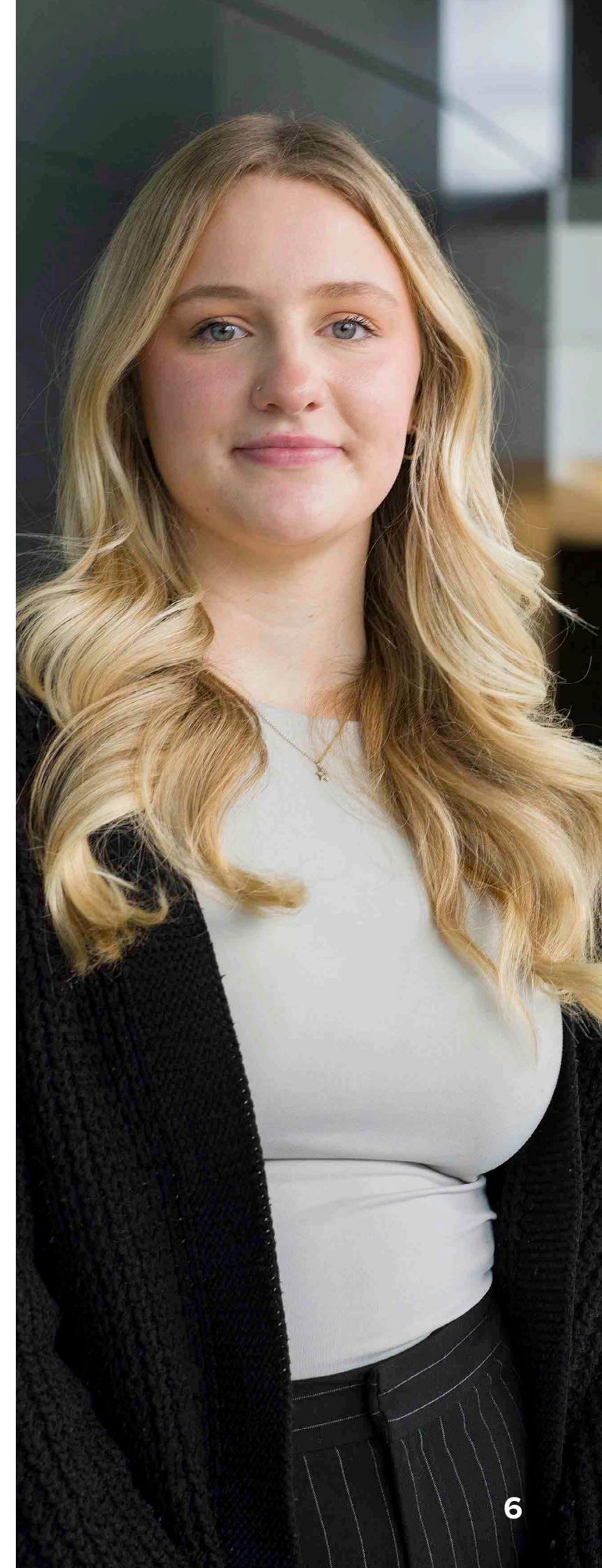
Education and training for the future

As the world's only global specific professional body, the IMI fulfills the sector's needs with the largest automotive qualification portfolio and the professional services to deliver industry specific training and assessment support.

TVET

The IMI offers TVET (Technical and Vocational Education and Training) Colleges and automotive training partners a future-proofed qualification life cycle that improves connectivity with the sector and its current skill demand:

- Best practice training models and interventions for teachers, trainers and assessors that improve quality, standards and capability
- Qualification progression pathways to keep knowledge up to date and relevant
- TVET and qualification evaluation to ensure a cost-effective skill system
- Best practice quality assurance standards and certification of training.



Building Future Skills For New Technology

As the world is transitioning to net zero emissions, automotive technology continues to grow at an unprecedented pace. In order for the automotive industry to grow and meet technological advancements, it is crucial that staff worldwide have the skills and knowledge to meet demand and be able to work safely.

The IMI provide a range of internationally recognised qualifications in safety critical technologies such as:

■ Electric / hybrid vehicles

Our range of qualifications provide everything from safety awareness to the maintenance, diagnosis and the repair of systems and components to ensure your technicians are fully qualified to work on electric and hybrid vehicle technology.

■ Advanced Driver Assistance Systems (ADAS)

As technology becomes pivotal to the performance of vehicles, so to does the need for technicians to be proficient in the calibration, diagnostics, rectification and recalibration of the various systems. Our qualifications ensure your staff are empowered with the skills to competently work with the new technologies.

■ Hydrogen

The rapid development of hydrogen fuel cells to provide a clean energy supply for vehicles has led to a critical need for technicians to be able to work

safely while carrying out maintenance and repair on hydrogen vehicles. The IMI can provide your technicians with the skills and knowledge required at the highest international standards.

The IMI recognise the need for continual professional development in developing future skills on new technologies.



IMI TechSafe provides your technicians with the recognition that communicates their knowledge, skills and competence in new technologies to your customers, whilst aiding your organisation in compliance with international government and insurance regulations.

By taking an IMI TechSafe entry qualification technicians can be included on the **IMI professional register**, joining a community of highly skilled technician in their field. In order to retain this they will need to carry out **IMI TechSafe Continuous Professional Development (CPD)** that ensures their skills remain up-to-date and relevant ensuring your technicians ability on new technologies continues to grow. IMI TechSafe CPD meets the requirement of an industry standard and is run by an awarding organisation aligning with a framework set and agreed upon by the IMI and IMI TechSafe Sector Advisory Group.

Start your IMI membership journey today

SCAN QR CODE HERE OR VISIT
<https://tide.theimi.org.uk/>



Professional Services

We provide professional training courses to give your workforce the ability and credibility to deliver training and assessment services internationally.



Technical Training for Trainers

A short course designed to support teachers and trainers upskill in relevant technical disciplines and give them the required skills to deliver to their teams and customers.

It is crucial for trainers to upskill in new technologies such as electric vehicle (EV) technology to stay relevant in the rapidly evolving automotive technology. Training and certification are available at different levels; successful teachers and trainers achieve IMI certification at the appropriate level. This programme is designed to support teacher/trainer continuous professional development (CPD) and transition from existing automotive technology to new.

Training can be provided at your own training centre or a location provided by the IMI.



Train the Assessor

The IMI assessor training programme will provide you with recognised certification in assessing IMI international qualifications. It will allow you and your company to access IMI products and services through centre approval, providing a clear path for professional growth within your region(s).

This short training course is designed to support assessors in upskilling in the best practices relevant to them. For example, assessment of students on IMI International EV qualification programmes. Successful candidates will receive internationally recognised IMI assessor accredited certification.

“

A week full of high-quality information, conveyed in an understandable and practical way in a super location. Thank you very much!

”

IMI membership, the home for automotive professionals

Membership is designed to connect you with a community of like-minded individuals who share your passion for the industry.

Through member webinars and an online community forum, you'll have the opportunity to build meaningful relationships and gain valuable insights that can fuel your professional growth.

We're committed to helping you develop your career and aspirations. Through our career's hub, we provide you with the support you need to reach new heights in your automotive career.

We understand the importance of having your voice heard on issues that matter most. As a member, you'll have the opportunity to express your opinions and insights, through surveys, groups and an open channel of communication with us.

Professional registration with the IMI gives you the trust and credibility you deserve, elevating your standing within the automotive community and reinforcing your expertise. The IMI Professional Register lists individual members and their place of work. These members have been recognised for their achievements, experience, professionalism and commitment to a Professional Standard of behaviours, and for keeping their knowledge and skills up to date through Continuing Professional Development (CPD).



Professional Status

Post-nominals give recognition that you're part of an international community achieving automotive excellence.



Career Resources

Access your careers hub, CV checker, career planner, mock interview coaching, key business skills and much more.



Community & Networks

Access the community forum and valuable networking opportunities with our webinars.

PROUD
TO BE
IMI

"Those wishing to remain ahead of the curve and on the forefront of these advancements should consider becoming a member of the IMI, keeping in mind that you are never too young to start learning and never too old to stop. I am confident that I can achieve my goals through the IMI. I feel privileged to be a member of an institute that has tirelessly dedicated itself to supporting, educating, training, developing, and promoting progress for both men and women within the automotive industry for over 100 years. Thank you for allowing me to be a proud member of the IMI family."

Adam Easty
AffIMI Member



"I take great pride in being a member of the IMI with authentic recognition and am eager to explore further opportunities for expanding my knowledge through IMI Connect and the ongoing learning and development available."

Ahmed Salih AAE MIMI

Get in touch today

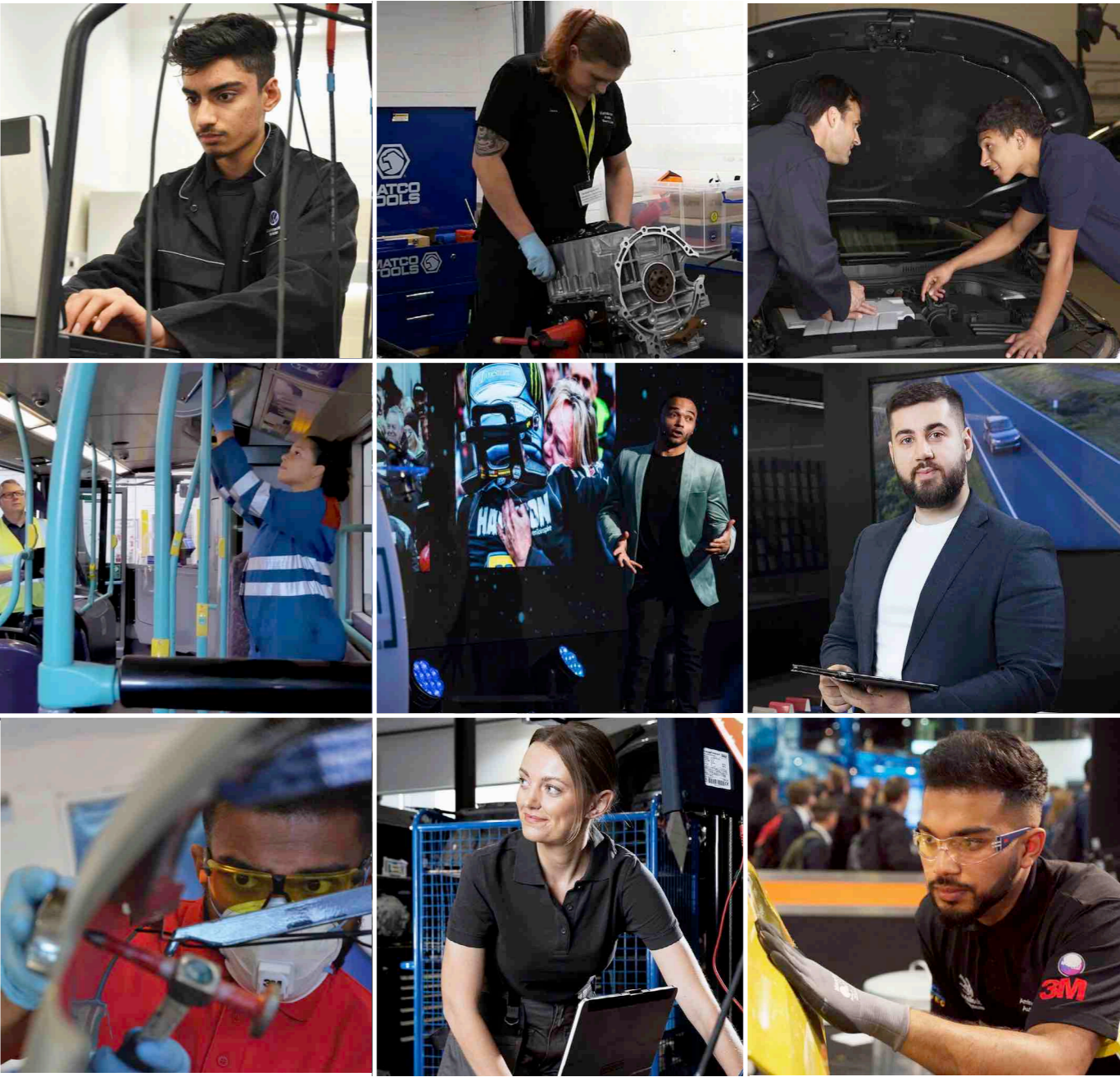
Our friendly team of sector experts are here to help and would love to hear from you. Contact us today and start your journey with the IMI, driving your business into the automotive future.



enquiries@theimi.org.uk



To learn more visit www.theimi.org.uk





INSTITUTE OF THE
MOTOR INDUSTRY

Institute of the Motor Industry

Fanshaws, Brickendon, Hertford, SG13 8PQ

+44(0) 1992 519 025

enquiries@theimi.org.uk

www.theimi.org.uk



#IMICommunity